



T.sonic Photo User's Manual

Introduction

Congratulations on purchasing **Transcend's MP3 Photo Player – T.sonic Photo**. Transcend's **T.sonic Photo** does more than just your usual MP3 Player. The Player is a high quality, high spec, multifunctional device that includes a 2" High-Resolution color LCD screen for viewing photos. **T.sonic Photo** includes a video-out port that allows you to connect to a TV or projector for viewing photos or making presentations. The unit supports MP3, WMA music playing, and JPEG photo viewing; it also has an expansion slot that supports SD/MMC memory cards. The MP3 player's functions have extended features like 5 EQ (Equalizer) modes and voice recording. **T.sonic Photo** from **Transcend** is your best choice of personal digital partner. With **Transcend's T.sonic Photo**, you can make your music and photo collections mobile, it brings sight to your ears.

Specifications



- 2" High Resolution LCD Panel (640 x 240 pixels)
- Embedded Flash memory (512MB)
- Supports MP3/WMA with 5 EQ Effects
- Colorful JPEG Photo Viewing and Storage
- Voice Recording
- Video-Out Port
- FM Tuner: Memory for 10 stations
- A-B Repeating Function
- Supports SD/MMC Card Reading
- PictBridge compatible for direct printing to any PictBridge-enabled printer
- Rechargeable lithium-ion battery (lasts 8~10 hours on a full charge)
- Dimensions: 87.9 mm x 70.2 mm x 21.7 mm
- Weight: 145 g (including battery)

⚠ Caution: Safety Instructions

Use the following safety guidelines to help protect you and your **T.sonic Photo** from potential damage.

For Use

- Avoid using or placing this product in an environment above 60°C or below 0°C.
- Do not allow this product to become damp or wet from water or any other liquids.
- Do not place this product in an environment with a strong magnetic field.
- Do not place this product in an environment that vibrates or is unstable.
- Do not use a damp/wet cloth to wipe or clean the exterior case and/or the LCD panel.
- Only the DC adapter specified for this product can be used.
- Do not use or store your **T.sonic Photo** in the environments listed below:
 - Direct sunlight
 - Next to an air conditioner, electric heater or other heat sources
 - In a closed car that is in direct sunlight

For Transporting

- Do not pack this product into luggage without the proper padded support. Other items in the luggage may damage the **T.sonic** Photo without the proper padding.
- Avoid squeezing the product to prevent damage to the LCD panel.
- Avoid placing objects onto the **T.sonic** to prevent damage.

⚠ Caution: Storage

PLEASE BACK UP YOUR DATA REGULARLY. TRANSCEND WILL NOT BE HELD RESPONSIBLE FOR LOSS OF DATA.



Warning: Battery Use

ONLY USE THE TRANSCEND PROVIDED BATTERY. USE OF ANOTHER BATTERY MAY PRESENT A RISK OF FIRE OR EXPLOSION.

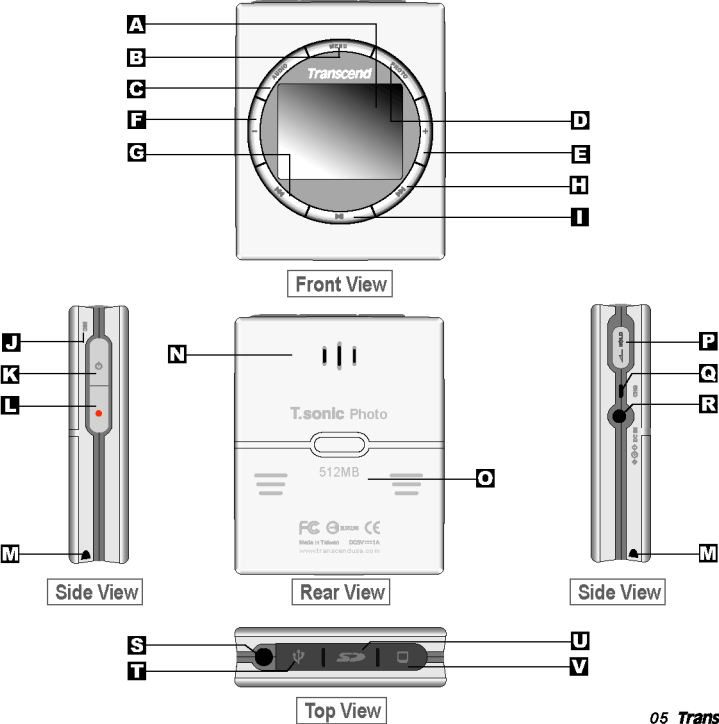
Warning: Power

- ONLY USE THE TRANSCEND PROVIDED DC ADAPTER APPROVED FOR USE WITH THE PORTABLE MP3 PHOTO PLAYER. USE OF ANOTHER DC ADAPTER MAY CAUSE A FIRE OR EXPLOSION.
- Before you connect **T.sonic Photo** to an electrical outlet; check the DC adapter voltage rating to ensure that the required voltage and frequency match the available power source.
- To remove **T.sonic Photo** from all power sources, turn **T.sonic Photo** off and disconnect the DC adapter from the electrical outlet.
- Be sure that nothing rests on your DC adapter's power cable and that the cable is not located where it can be tripped over or stepped on.

Caution: Audio






- Repeated or regular use of headphones or earphones at volume levels above 80 decibels can give a false impression that the audio level is not adequate. End users may try to progressively increase the volume control therefore risking damage to their ears.
- To protect your health and your hearing, keep the volume of your MP3 player below 80 decibels and do not use for an extended period of time. Stop use if symptoms like headaches, nausea, or hearing disorders occur.
- Your MP3 player is limited to a volume level of 100 decibels.
- Both the MP3 player and the earphones are compliant with the French regulation concerning musical Walkmans (24th July 1998 Order).
- Before using other earphones, confirm that their technical features are similar to those of the original set.

Product Overview





Front View

- A** **2" LTPS LCD Panel** – Colorful display interface.
- B** **Menu Button** – Press the menu button to view Menu options. Press the **Menu Button** repeatedly to move between different Menu configurations and modes (e.g. Audio / File / Settings).
- C** **Audio Button** –
Press the **Audio Button** to switch to the **Audio Mode: Music** (Pressing the **Audio Button** again can shift between **Music and Radio**).
Press and hold the **Audio Button** to switch the data source between embedded Flash memory and external memory cards.
- D** **Photo Button** –
There are two ways to view the photo files, **File List** and **Thumbnail**. Press the photo button to shift between these two file-browsing types.
Press and hold the **Photo Button** to switch the data sources between embedded Flash memory and external memory cards.
- E** **Volume (Up) Button**  – Press the **Volume Up Button** to increase the volume.
- F** **Volume (Down) Button**  – Press the **Volume Down Button** to decrease the volume.
- G** **Previous Button**  – Press the **Previous Button** to move the cursor to the previous item, play the previous item, or select the previous item in the menu.
- H** **Next Button**  – Press the **Next Button** to move the cursor to the next item, play the next item, or select the next item in the menu.
- I** **Enter/Play Button**  – Press the **Enter/Play Button** to execute selected functions, display selected photos or play music. Press the **Enter/Play Button** again to pause the music while listening to a song. Pressing and holding the **Enter/Play Button** will stop all functions and the device will return to Audio/Photo mode.

Side View

- J** **Mic.** – Integrated microphone allows you to voice record.
- K** **Power Button** – Press and hold the **Power Button** for 2 seconds to turn the **T.sonic Photo** on and off.
- L** **Record Button** – Press and hold the record button for 2 seconds to start the recording function. Press a second time to stop the recording.
- M** **Hand Strap Hole** – Attach the hand strap.

Rear View

- N** **Speaker** – Speaker for playing music or recorded files.
- O** **Battery Slot** – Rechargeable Battery Slot.

Side View

- P** **Lock Switch** – Move this switch to lock all buttons when you want to prevent them from being pressed accidentally (**Note**: When your **T.sonic Photo** is locked, you cannot turn your **T.sonic Photo** on or off).
- Q** **Battery LED Indicator** – Red light indicates the battery is charging, green light indicates the battery has finished charging.
- R** **DC Adapter Port** – Connect the DC Adapter.
- M** **Hand Strap Hole** – Attach the hand strap.

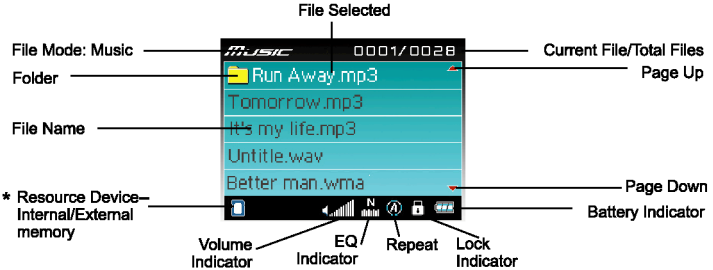
Top View

- S** **Earphones Port** – Attach the earphones/speakers.
- T** **USB 2.0/1.1 Port** – Connect your **T.sonic Photo** to your computer.
- U** **SD/MMC Card Slot** – Supports SD and MMC memory cards.
- V** **A/V Out Port** – Connect A/V Cable.



Interface and Icon Description

Audio Mode: Music



: Battery Indicator



: Battery in charge



: EQ indicator -- Normal



: EQ indicator—Jazz



: EQ indicator – Pop



: EQ indicator – Rock



: EQ indicator – Classic



: Lock indicator



: Volume indicator



: Resource Device: Internal Flash Memory



: Resource Device: External SD/MMC Card



: Repeat – All songs



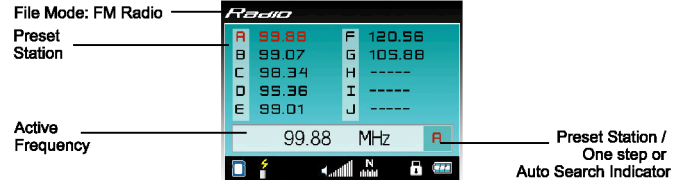
: Repeat – One song



: Random

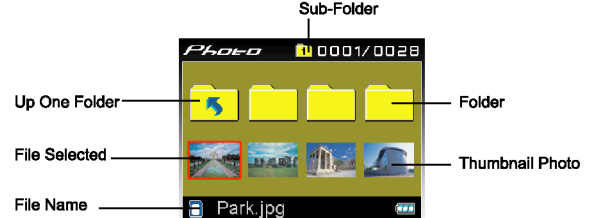
* If a memory card is inserted in the card slot it is automatically selected as the default resource device.

Audio Mode: Radio



: Radio Station Searching

Photo Mode : Thumbnail Mode

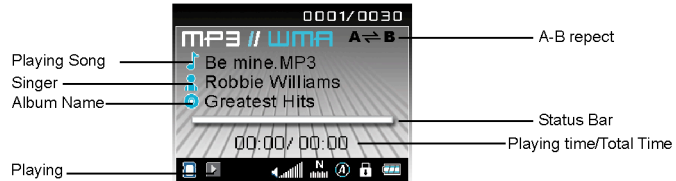


Sub-Folder-T.sonic Photo can support up to 10 levels of subfolders.



Interface and Icon Description

Music Playing



Voice Recording



Setup

System Requirements

To connect your **T.sonic Photo** to a computer, the system requirements are:

1. Desktop or notebook computer with a USB port
2. One of the following operating systems:
 - Windows 98/98SE
 - Windows ME (No driver needed)
 - Windows 2000 SP3 or later (No driver needed)
 - Windows XP (No driver needed)

Driver Installations

Windows® 98/98SE:

1. Turn on the computer. Verify the USB port is enabled and working properly (Do not plug your **T.sonic Photo** into the USB port at this time).
2. Insert the Driver CD into the CD-ROM drive.
3. If the CD doesn't auto-start, then execute **Setup.exe** in the <CD-Drive>:\Driver\Windows98 for Windows 98 of the driver CD. The setup menu will appear.
4. After selecting the **Install Driver** button from the setup menu, the InstallShield Wizard will guide you through the installation process.
5. Restart your computer to complete the driver installation.

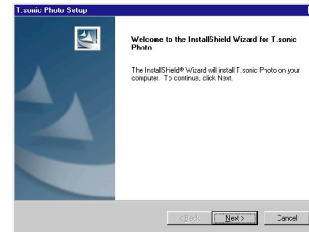


Fig1: Installation Wizard

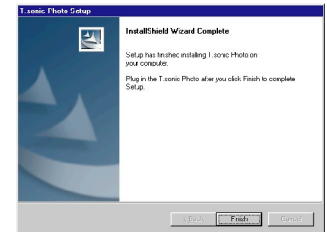


Fig2: Installation Complete

Connecting to a Computer

Using the USB cable provided, connect your **T.sonic Photo** to a computer to transfer photo, audio or other data files. **Note:** If your computer operating system is Windows 98, please install the driver first.

1. Connect the smaller end of the USB cable to the USB port on your **T.sonic Photo**.
2. Connect the larger end of the USB cable to the USB port on your computer.

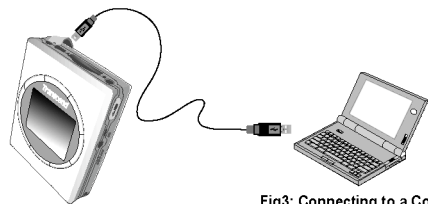


Fig3: Connecting to a Computer

Charging the Battery

Your **T.sonic Photo** has an integrated, rechargeable, lithium-ion battery (1800 mAh). Before you use your **T.sonic Photo** for the first time, you must charge the battery for at least 8 hours.

Warning

ONLY USE THE TRANSCEND PROVIDED BATTERY. USE OF ANOTHER BATTERY MAY PRESENT A RISK OF FIRE OR EXPLOSION.

1. Connect the DC header of the adapter cable to the DC adapter port on your **T.sonic Photo**.
2. Connect the power cord of the adapter cable to an electrical outlet. The **Battery LED indicator** on your **T.sonic Photo** will turn red. This means the lithium-ion polymer battery is charging.
3. Once the **Battery LED indicator** turns green, your **T.sonic Photo** has finished charging and the battery is at a full charge.
4. After charging for the first time, it will take approximately 4 hours to completely recharge the battery.

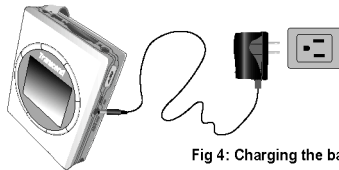


Fig 4: Charging the battery

Performing a Reset

www.transcendusa.com



If your **T.sonic Photo** stops responding, perform a reset. Files that are being transferred may be lost but other data is normally retained.

To perform a reset, press the **Power Button** and **Menu Button** simultaneously. The **T.sonic Photo** will turn off immediately. Then you can press the **Power Button** to turn on your **T.sonic Photo** again.

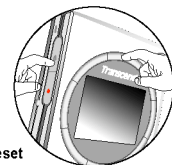


Fig 5: Performing a Reset

Operation

Turning the Power On/Off

Power On: Press & Hold the **Power Button** for 2 seconds to turn on your **T.sonic Photo**. The default screen is the Audio Mode – Music.

Power Off: Press & Hold the **Power Button** for 2 seconds to turn off your **T.sonic Photo**.

Power Save Mode: **T.sonic Photo** supports the auto power save function. If the **T.sonic Photo** is idle for a certain period of time, it will enter the power save mode automatically. You can set your power save mode time in the **Menu options** (The default Power Save time is disabled).

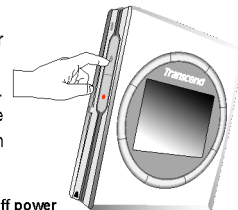


Fig 6: Press and hold to turn on/off power

Lock

Move the **Lock Switch** to lock or unlock the buttons on your **T.sonic Photo**. Lock the buttons when you want to prevent them from being pressed accidentally.

Note: When your **T.sonic Photo** is locked, you cannot turn your **T.sonic Photo** on or off.



Fig 7: Lock Button



Downloading files from a PC to the T.sonic Photo

1. Use the USB cable included in the package to connect **T.sonic Photo** to the USB port of your PC.
2. A new USB mass-storage device will be found and **T.sonic Photo** will be listed as a new drive under your operating system.
3. **T.sonic Photo** will automatically recognize your music (MP3/WMA/WAV) and photo (JPEG) files. In Audio Mode, you will only be able to select from your music catalogue; In Photo Mode, you will only be able to choose from your photo collection.

Note: If you store files other than MP3/WMA/WAV/JPEG in a folder and transfer the folder to **T.sonic Photo**. The device will only recognize those files listed above and will not recognize any other files, but these files will take up memory.

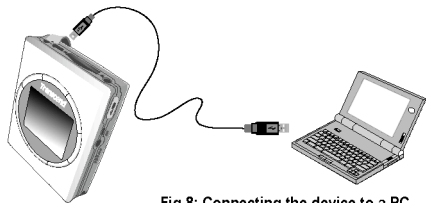


Fig 8: Connecting the device to a PC

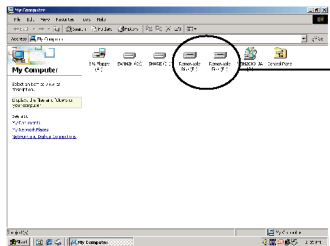
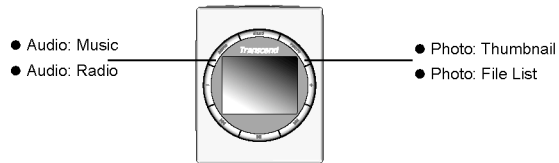


Fig 9: File Management in PC

Card Reader Function

Switching Between Audio and Photo Modes

1. There are two modes on your **T.sonic Photo**, **Audio Mode** and **Photo Mode**.
2. Press the **Audio Button** to switch to the **Audio Mode: Music**. Press the **Audio Button** again and you can switch to the **Radio**. Press the **Audio Button** repeatedly and you can switch between these two audio functions.
Note: Please insert your earphones when you switch to the FM Radio mode.
3. Press the **Photo Button** to switch to the **Photo Mode**. There are two file-browsing types for photo files. **Thumbnail** and **File List**. Press the **Photo Button** repeatedly and you can switch between these two photo-browsing types.



Browsing Music Files

1. Press the **Audio Button** to switch to the Music files (MP3/WMA) browsing page.
2. Press the **Next** or **Previous** Button to select a file you want to play.
3. Press and hold the **Next** or **Previous** Button to scroll between pages.
4. Press the **Enter/Play** Button to play the music.
5. Press the **Volume Up** or **Down** Button to adjust the music volume.

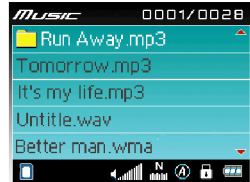


Fig10: Browsing music files



Playing Music Files

1. Press the **Enter/Play Button** to play the music.
2. While playing music, press the **Enter/Play Button** to pause the music.
3. While playing music, press and hold the **Enter/Play Button** to stop the music, then return back to the Music browsing page.
4. To begin using the A-B repeat function while playing music, press the **Record Button** once to mark the beginning of the track and press the **Record Button** again to mark the end section of the track you wish to repeat. To cancel the A-B repeat function, press the **Record Button** for a third time.



Fig11: Playing MP3/WMA music file



Fig12: Playing Wave voice file

Audio Mode: Radio

1. Press the **Audio Button** repeatedly to switch between Music and Radio.
2. Press the **Audio Button** and switch to **Radio**.
Note: Please insert your earphones when you switch to the FM Radio mode.
3. Press the **Next** or **Previous** **Button** to search for available radio stations manually.
4. Press and hold the **Next** or **Previous** **Button** to automatically search for available radio stations.
5. If you would like to save a preferred radio station, press the **Record Button**. To listen to your preset stations, press the **Enter/Play Button** to hear each preset station one by one.
6. If you would like to delete one or all of the preset radio stations, press the **Menu Button** and follow the Delete process as described in the " " section in the **Menu** Chapter.

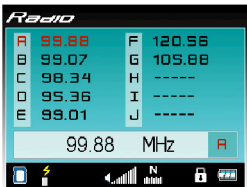


Fig13: FM radio

Browsing Photo Files

1. There are two ways to view your photo files.
 - File List
 - Thumbnail
2. Press the **Photo Button** repeatedly and
3. you can switch between these two browsing methods.
4. Press the **Next** or **Previous** **Button** to select a file you want to play.
5. Press the **Enter/Play Button** to view the photo.

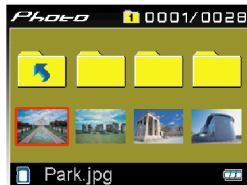


Fig14: Thumbnail Browsing



Fig15: File List Browsing

Viewing Photos and Automatic Slide Show

1. In the Photo browsing page, press the **Enter/Play Button** to view the photo.
Note: Certain JPEG files cannot be recognized by the T.sonic Photo. In this instance, please use the bundled "T.sonic Photo Converter" Software to convert the files so that they can be recognized by the T.sonic Photo.
2. Press the **Next** or **Previous** **Button** to select the next or previous photo.
3. While viewing photos, press the **Enter/Play Button** again to begin the auto slideshow.
4. During the slideshow, press the **Enter/Play Button** again to pause the auto slideshow.
5. While pausing the slideshow, press the **Enter/Play Button** again to resume the auto slideshow.
6. Press and hold the **Enter/Play Button** to stop the auto slide show and return to the Photo browsing page.



Fig16: Photo Slide Show

Setting the Automatic Slide Show Timer

1. The time in-between slides being displayed can be set to 1, 3, 5 or 7-second intervals.
2. Press the **Next** (▶) or **Previous** (◀) **Button** to pan through the time interval settings and choose the delay you want.



Fig 17: Automatic Slide Show Timer

Recording

1. Press and hold the **Record Button** to begin recording.
2. The recording page will show the recording time.
3. For better recording quality, hold the microphone as close as possible to the voice or sound being recorded.
4. Press the **Record Button** again to stop recording and it will switch to the Audio Mode.
5. Press the **Enter/Play Button** (▶) to play the file you just recorded.

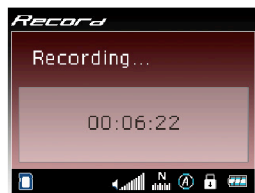


Fig 18: Recording Voice

Viewing Photos from a TV or Projector

1. Use the A/V cable included in the package to connect the **T.sonic Photo** to the A/V port of your TV or projector.
2. Plug the end with the yellow connector into the Video-In port and Red connector into the Audio-In port of your TV or projector.
3. Plug the other end of the A/V cable into the **A/V Port** of your **T.sonic Photo**.
4. Press and hold the Power Button for 2 seconds to turn on your **T.sonic Photo**.
5. Insert the memory card into the card slot or choose the internal memory resource and your **T.sonic Photo** can slideshow the available JPEG photos stored on the memory card.
6. The same operation applies when plugging the device into LCD screen for photo viewing.

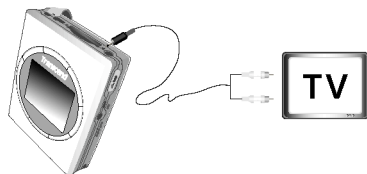


Fig 19: Viewing Photos from a TV or Projector

Displaying a PowerPoint presentation

www.transcendusa.com



1. Save a copy of your PowerPoint presentation as a JPEG file (*.jpg).
2. Each slide in the presentation will be saved as an individual JPEG file.
Note: Certain JPEG files cannot be recognized by the **T.sonic Photo**. In this instance, please use the bundled "T.sonic Photo Converter" Software to convert the files so that they can be recognized by the **T.sonic Photo**.
3. Copy these files directly to your **T.sonic Photo** or to an MMC/SD memory card.
4. Plug your **T.sonic Photo** directly into a projector using the units A/V port and cable.
5. Choose the presentation slides that you want to show or set up an automatic slide show of your presentation.

Connecting to a Photo Printer(PictBridge)

Using the USB cable provided, connect your **T.sonic Photo** to a photo printer(PictBridge compatible) to print photo files.

1. Display the photo you wish to print, press and hold the **Record Button** until the message box pops up
2. Connect the smaller end of the USB cable to the USB port on your **T.sonic Photo**.
3. Connect the larger end of the USB cable to the USB port on the photo printer.
Note: Please consult your photo printer manual for any special instructions regarding connecting devices
4. Follow the on-screen steps listed below to choose the hard copy picture type you wish to print:
 - Size: Photo Size. Sizes are dependent on the type of photo printer and the paper you are using.
 - Copies: How many copies do you wish to print.

Note: These settings are dependent on the photo printer you use.

5. Use **Enter/Play Button** to change the settings
6. Press the **Enter/Play Button** to start printing or remove the USB cable to cancel the printing.



Setting Menu Operations

Menu Operations

1. Press the **Menu Button** to open the settings menu.
2. There are three setting menus: **Audio Menu**(Audio/File/Setting), **Photo Menu**(Photo/File/Setting) and **Radio Menu**(Radio/Setting)
3. Press the **Menu Button** repeatedly to switch between these three configuration modes.
4. After choosing one mode, press the **Next** [M] or **Previous** [M] **Button** to select the item you want to configure and then press the **Enter/Play Button** to change the value.
5. After selecting the Basic Settings Mode, press the **Menu Button** again or press the **Audio** or **Photo Button** to cancel the settings menu operation.



Fig 20: Pop Up Menu

Menu Introduction

1. Audio Control Mode

EQ Effectsrom: You can change your music tone to a different equalizer status. There are four modes to choose from:

- **Normal (Default):** Normal mode for music playing
- **Rock:** Rock & Roll mode for music playing
- **Pop:** Pop music mode for music playing
- **Jazz:** Jazz style mode for music playing.
- **Classic:** Classic style mode for music playing

Repeat and Random: When playing the music, you can repeat one selected song or all songs listed in the data source.

- **Off (Default):** Repeat function off.
- **Single:** Repeat playing a selected song.
- **All:** Repeat all songs on the selected data source.
- **Random:** Randomly play different songs.

2. Radio Control Mode(Radio Menu)

- **Delete One Station:** You can delete the currently selected preset station
- **Delete All Stations:** You can delete all preset stations
- **Add Preset Station:** You can add a new preset station.

3. Photo Control Mode(Photo Menu)

Slideshow Timer

- **1 Sec. :** Change the photo delay time to 1 sec.
- **3 Sec. (Default):** Change the photo delay time to 3 sec.
- **5 Sec. :** Change the photo delay time to 5 sec.
- **7 Sec. :** Change the photo delay time to 7 sec.

Browsing Type

- **Thumbnail (Default):** Pan through the stored photos by Thumbnail.
- **File List:** Pan through the stored photos by Listed Files

4. File Control Mode

Source: Select the data source for playing the music or photos. You can select the same function by pressing and holding the **Audio** or **Photo Button**. If a flash memory card is inserted in the card slot and a memory source is not specified the memory card will be automatically selected as the default memory source.

- **SD/MMC:** Select the external SD or MMC memory cards as your data source.
- **Memory:** Select the embedded flash memory as your data source.



Copy: Copy the selected file from the memory card to the embedded flash memory, or vice versa.

Delete: Delete the selected file.

Format: Format the selected device.

( **Warning:** Formatting the selected device will erase all the data.)

Update Firmware: You can download the latest firmware from Transcend's Web site to upgrade the functions of your **T.sonic Photo**.

Note: You must be connected to the **Transcend** website to download the latest firmware for your player.

5. Basic Settings Mode

Brightness: Adjust the brightness of the screen (If you choose a high level of brightness, it may reduce your battery life due to higher power consumption).

- **Normal (Default)** : Standard screen brightness.
- **High:** Higher screen brightness.
- **Low:** Lower screen brightness.

Backlight Timer: Turn off the backlight while playing the music. If there's no button action, the device will automatically turn off the backlight.

- **10 Sec.** : The backlight will be turned off in 10 seconds.
- **30 Sec.:** The backlight will be turned off in 30 seconds.
- **Always On (Default):** The backlight will not be turned off automatically.

Auto Sleep: Will automatically turn off **T.sonic Photo** after a specified time frame.

- **10 Min.:** Power will be turned off after the device is idle for 10 minutes.
- **30 Min.:** Power will be turned off after the device is idle for 30 minutes.
- **60 Min.:** Power will be turned off after the device is idle for 60 minutes.
- **Off (Default):** **T.sonic Photo** will not turn off automatically.

(**Note:** When you are playing MP3 music, listening to FM radio program, or slide-showing your photo collections, **T.sonic Photo's** auto sleep function is overridden.)

TV Out Format: Adjusts the TV system

- **NTSC (Default):** Changes the Video-out signal to the NTSC TV system signal.
- **PAL:** Changes the Video-out signal to the PAL TV system signal.

Language: Change the settings menu language. Supports 11 different languages.

- | | | | |
|---------------------|------------|--------------|-----------------------|
| ● English (Default) | ● Italian | ● Portuguese | ● Simplified Chinese |
| ● French | ● Japanese | ● Russian | ● Traditional Chinese |
| ● German | ● Korean | ● Spanish | |



FAQ

This section covers common problems or questions you might encounter while using your **Transcend T.sonic Photo**. **Do not try to open the case of your T.sonic Photo or the warranty will be voided.** If a fault occurs, first check the points listed below. If you are unable to solve the problem with this information, please consult your dealer or service center.

Q: I cannot turn my Transcend T.sonic Photo on.

A: You may not be holding the **Power Button** down for long enough. Please press and hold the Power button down for at least 2 seconds. Check to see if the **Lock Button** is in the locked position. If so, move it to the unlocked position to turn on the device. If that doesn't solve the problem, **T.sonic Photo** may be out of power. You can connect the adapter to the **T.sonic Photo** then turn on the **T.sonic Photo**.

Q: What if the battery runs out of power?

A: If you see the capacity of the battery icon on your screen is empty, please recharge your battery by using the adapter.

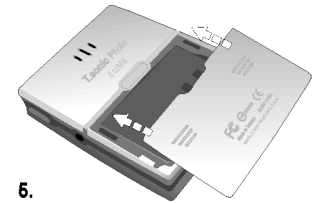
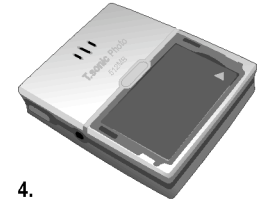
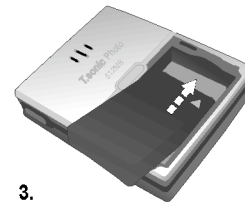
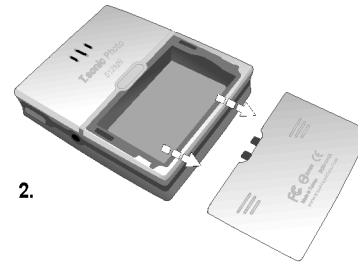
See "Charging the Battery" section in the Setup Chapter.

Q: How do I change the battery of my T.sonic Photo? (This will not void the warranty)

A: Verify that you are using a Transcend certified battery. Please be aware using another battery, which is not provided by Transcend, may cause a fire or explosion.

1. Push the battery cover switch located on the rear of the unit and slide open the cover.
2. Remove the battery
3. Reinsert the screw before closing the cover.

Note: Do **NOT** force the battery into its slot. If the battery does not easily fit, make sure that you are inserting it correctly.





⚠ Warning


THERE IS A DANGER OF EXPLOSION IF THE BATTERY IS INSTALLED INCORRECTLY.

⚠ Warning

USE ONLY TRANSCEND APPROVED BATTERIES; USE OF ANOTHER BATTERY MAY PRESENT A RISK OF FIRE OR EXPLOSION.

Please contact your dealer or service center if you are not sure you can replace the battery by yourself.

Q: Where is my Stop button?

A: The **Play/Pause**  button also functions as the Stop Button when it is held in for about 2 seconds.

Q: I cannot see or access music or photo files stored on my T.sonic Photo's internal memory?

A: Check that you do not have a memory card selected as the preferred memory source in the **Menu** settings.

Q: I am unable to hear music or recorded sounds through the Player's speaker.

A: First check that you do not have earphones plugged into the unit's earphone port, next check that you have the volume set to a high enough level.

Q: What size of external MMC/SD cards can my T.sonic Photo take?

A: Currently your **T.sonic Photo** can take MMC/SD cards up to **4GB** in size.

Q: How much MP3 music can I store on my T.sonic Photo's internal memory?

A: You can store approximately 17 hours on the 512MB player.

Q: Transcend T.sonic Photo hangs/lags/stalls.

A: Whenever the Transcend **T.sonic Photo** hangs; you can follow the Reset process as described in the "Performing a Reset" section in the **Setup** Chapter.

Ordering Information

T.sonic Photo

<i>Transcend P/N</i>	<i>Capacity</i>
----------------------	-----------------

TS512MMP810EU	512MB
----------------------	--------------

